



EXAGATE

SECURE
YOUR **IT**
INFRASTRUCTURE



Monitoring and Management Systems

CONTENTS

2

Corporate

4

Why Exagate

6

Solutions

12

Systems

22

Summary

ABOUT US

Founded in year 2006 as a Research & Development company for environmental monitoring and control, Exagate is the smart solutions vendor for your environmental monitoring, power distribution units and energy management needs in your data centers, multi-branch IT enterprise infrastructures and telecom cellular - satellite – broadband wireless and similar type of sites. Being privately held, Exagate is based in Istanbul/Turkey with its all manufacturing and research facilities investing a considerable part of its revenues to R&D





Uninterruptable IT Infrastructure

Exagate is focusing to offer high-end solutions which will secure your IT infrastructure against data loss due to environmental parameters and manage your energy systems effectively. Based on this while continuously updating its current generic product line, Exagate frequently presents new solutions to the market to meet the IT energy efficiency and system operability challenges to maximize uptime. Bespoke software and hardware solutions for particular IT and Telecom projects are one of the core businesses of Exagate as well.



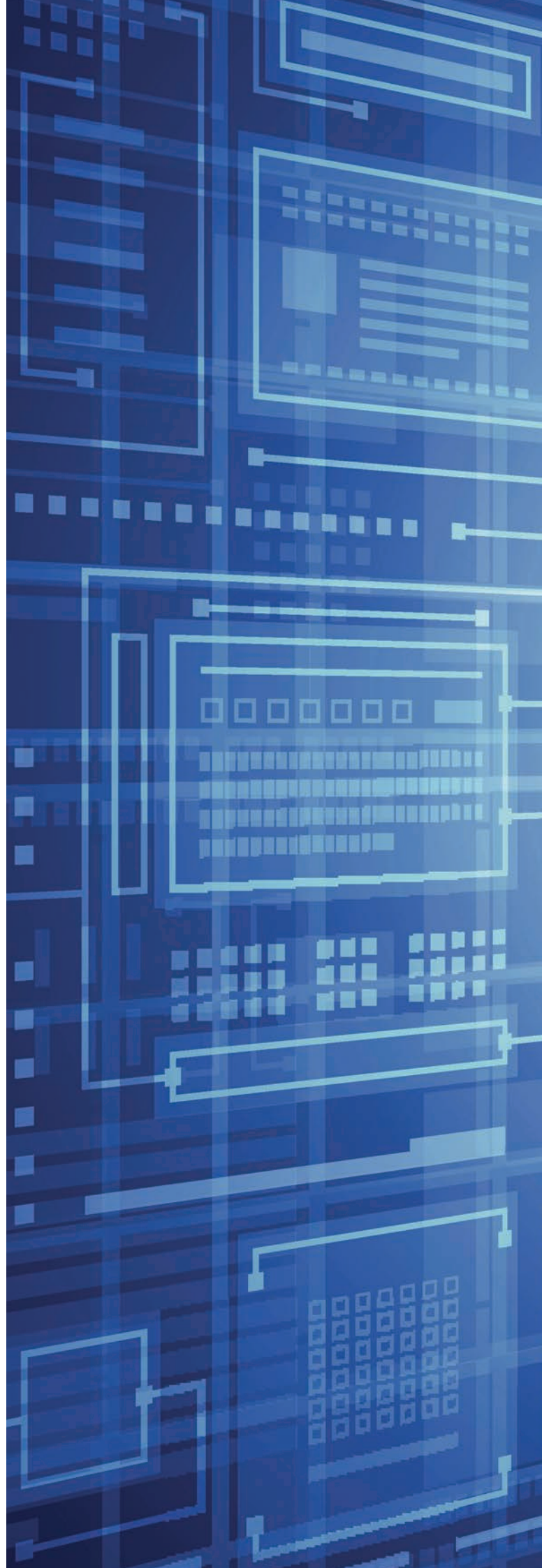
WHY EXAGATE

EXAGATE offers state of the art Environmental Monitoring, IP PDUs and Energy Management System Solutions to secure and manage your IT infrastructure to maximize uptime. With its scalable and feature rich product portfolio EXAGATE is the right choice to address all of your needs within this segment. Backed by its R&D heritage, EXAGATE is highly capable of offering customized solutions besides its wide generic product portfolio.

Customer satisfaction, product reliability and rich portfolio are among the core drivers of our business

Scalable, feature rich and bespoke solutions for your IT Infrastructure

- EXAGATE'S "high-end" Environmental Monitoring, Power Distribution Units (IP PDUs) and Energy Management System Solutions are solely owned and in-house developed
- EXAGATE product portfolio covers all the market segments: Scalable Solutions for Soho – Enterprise –Telecom customers
- EXAGATE offers complete and feature rich solutions with its variety of sensors and 3rd party integrations
- Centralized Management Software with professional skills enables high level monitoring & management & reporting of your IT infrastructures
- EXAGATE is highly capable of providing "bespoke" solutions with pre-sales and project oriented support and implementation
- EXAGATE implements full after sales support to its customers to ensure them with "peace of mind"





Solutions



Data Center

Multi-Branch Site

Remote Site

DATA CENTER

Data Centers shall always be secure for maximum uptime to ensure the operational sustainability. On the other hand energy efficiency is the key factor to improve overall performance and reach a better return of investment (ROI). To accomplish this Exagate offers both customized and standard software and hardware (monitoring devices, IP PDUs and energy management systems) serving for professionally monitoring and managing your data center and data network enclosures.

Solutions to monitor and manage the crucial environmental and energy parameters for data network enclosures and data centers:

- Monitoring of environmental parameters such as temperature, humidity, water leakage, smoke, air flow control, motion, door access and light level etc.
- Monitoring of electrical parameters of current, voltage, power, power consumption, power factor thank to the IP PDUs and also 3rd party integrated devices such as UPS, transformers, generators, air conditioning systems- CRACs, fire extinguishing systems etc.
- Setting of alarms by means of e-mail, SMS and voice calls to predefined users
- Centrally monitor and manage all the main and branch locations by users in different authorization levels
- To be accessible to all monitoring, management and installation processes by users in different authorization level.
- Professionally recording and archiving reports
- Monitoring of IP Cameras



**Today,
enterprises
are aiming for
operational
sustainability
and energy
efficiency of
their Data
Centers to have
“peace of mind”**

A low-angle, upward-looking photograph of several modern skyscrapers. The buildings feature a mix of glass facades and textured, metallic or stone-like cladding. The sky is a vibrant blue with scattered white clouds. A semi-transparent red rectangular box is positioned on the left side of the image, containing white text.

**Secured overall
IT operability is
vital for financial
institutions,
government
agencies, police
departments,
insurance
companies
and similar
establishments of
a multi-branch IT
infrastructure**

MULTI-BRANCH SITE

Financial institutions, government agencies, police departments, insurance companies and similar establishments own a multi-branch IT infrastructure. To secure the overall IT operability Exagate offers highly effective and reliable branch environmental monitoring and energy management solutions for your multi-branch IT infrastructure and may develop customized solutions that can fit to the operation model of your corporate IT.

Solutions to monitor and manage the crucial parameters in multi-branch sites' data network enclosures and data system rooms:

- Temperature and humidity controls
- Water leakage control
- Smoke, motion, door access controls
- Air flow and air quality controls
- Day / Night IP camera integration
- Monitoring of generators, UPS, air conditioners and other critical IT related devices via protocols such as RS-232, RS-485, Modbus, SNMP etc.
- Monitoring branch reactive panels via RS-485 module
- Monitoring network status of the active devices
- Energy monitoring
- Powering generators and resetting network switches via relay output
- Setting of alarms and informing by means of e-mail, SMS and voice calls to predefined users
- Professionally recording and archiving reports
- Centrally monitor and manage all the main and branch locations by users in different authorization levels

REMOTE SITE

GSM mobile base stations, Transmission relay stations, TV-Radio transmitter stations, Telecom exchanges, Microwave communication stations, Satellite communication stations, Military shelters, Transformer stations and other similar un-manned remote sites located indoor/outdoor, are operating under severe harsh and volatile climate conditions with difficult physical access. To secure their service sustainability Exagate offers remote site monitoring and energy management solutions to keep the quality of service levels and save your service budgets.

Solutions to monitor and manage remote sites' indoor/outdoor data network enclosures and data system shelters:

- Temperature and humidity controls
- Water leakage control
- Smoke, motion, door access controls
- Air flow and air quality controls
- Day / Night IP camera integration
- Monitoring of generators, UPS, DC power supplies, electricity meters, air conditioners and other similar devices via protocols such as RS-232, RS-485, Modbus, SNMP etc.
- Monitoring network status of the active devices
- Powering generators and resetting network switches via relay output
- Anti-theft and sabotage monitoring
- Setting of alarms by means of send e-mail, SMS and voice calls to predefined users
- Professionally recording and archiving reports
- Centrally monitor and manage all the remote locations by users in different authorization levels with customized software integration



**Customized
solutions for
the service
sustainability
of TV and radio
transmitter stations,
GSM mobile base
stations,
satellite
communication
stations and similar
networks**



Environmental Monitoring

Energy Management

Centralized Management

A blurred background image of a server rack with various components and cables visible.

— Systems —

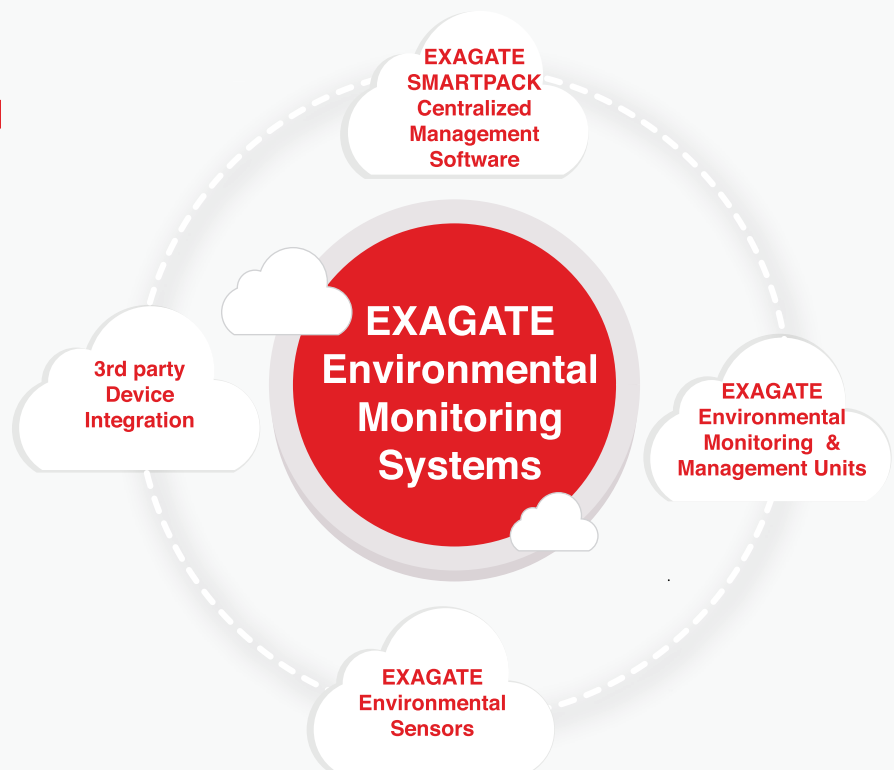
Environmental Monitoring

SmartPack Environmental Monitoring

EXAGATE SmartPack Centralized Management Software allows you to monitor and manage your entire IT infrastructure system's environmental and electrical parameters via web interface

SmartPack Environmental Management Workflow

- ✓ Monitor
- ✓ Alarm
- ✓ Manage
- ✓ Report and Analyze



Exagate Environmental Monitoring

SYSGuard 6001

- Modular design
- Supports up to 124 sensors
- Supports up to 992 dry contacts
- Supports up to 496 relay outputs
- Integration with 3rd party devices
- SNMP support

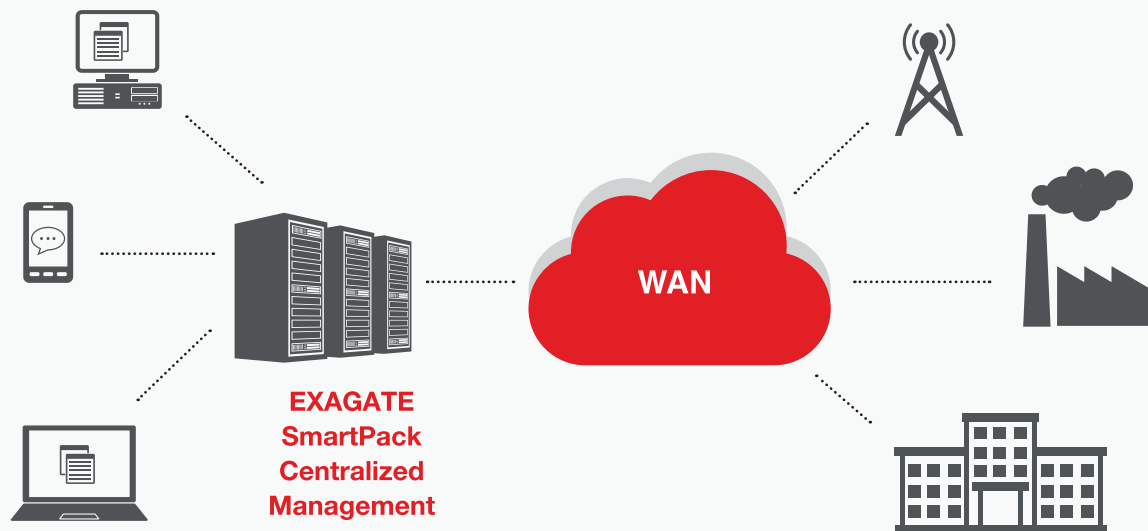


SYSGuard 3001

- 1 built-in temperature and humidity sensor
- 16 ports external sensor input
- 16 ports dry contact inputs
- 4 ports relay outputs
- 4 ports analog or water detect cable inputs
- SNMP support



ing Systems



- ✓ Rack and Room based monitoring of environmental parameters such as temperature, humidity, water leakage, smoke, air flow control, motion, door access and light level etc.
- ✓ Managing of your IT infrastructure when receiving alarms by deploying pre-defined tasks
- ✓ Alarming of critical and pre-defined parameters via e-mail, SMS, voice calling, buzzer
- ✓ Get detailed reports to analyze your critical IT infrastructure

ring and Management Units

SYSGuard 2001

- Built-in temperature and humidity sensor
- 4 ports external sensor input
- 4 ports dry contact input
- 2 ports relay outputs
- 1 port water detect sensor
- SNMP support



SYSGuard Sensors

- Temperature&humidity
- Flood detection, smoke detection
- Air flow, air pressure
- Door access, IP cam
- Energy module
- Integration module

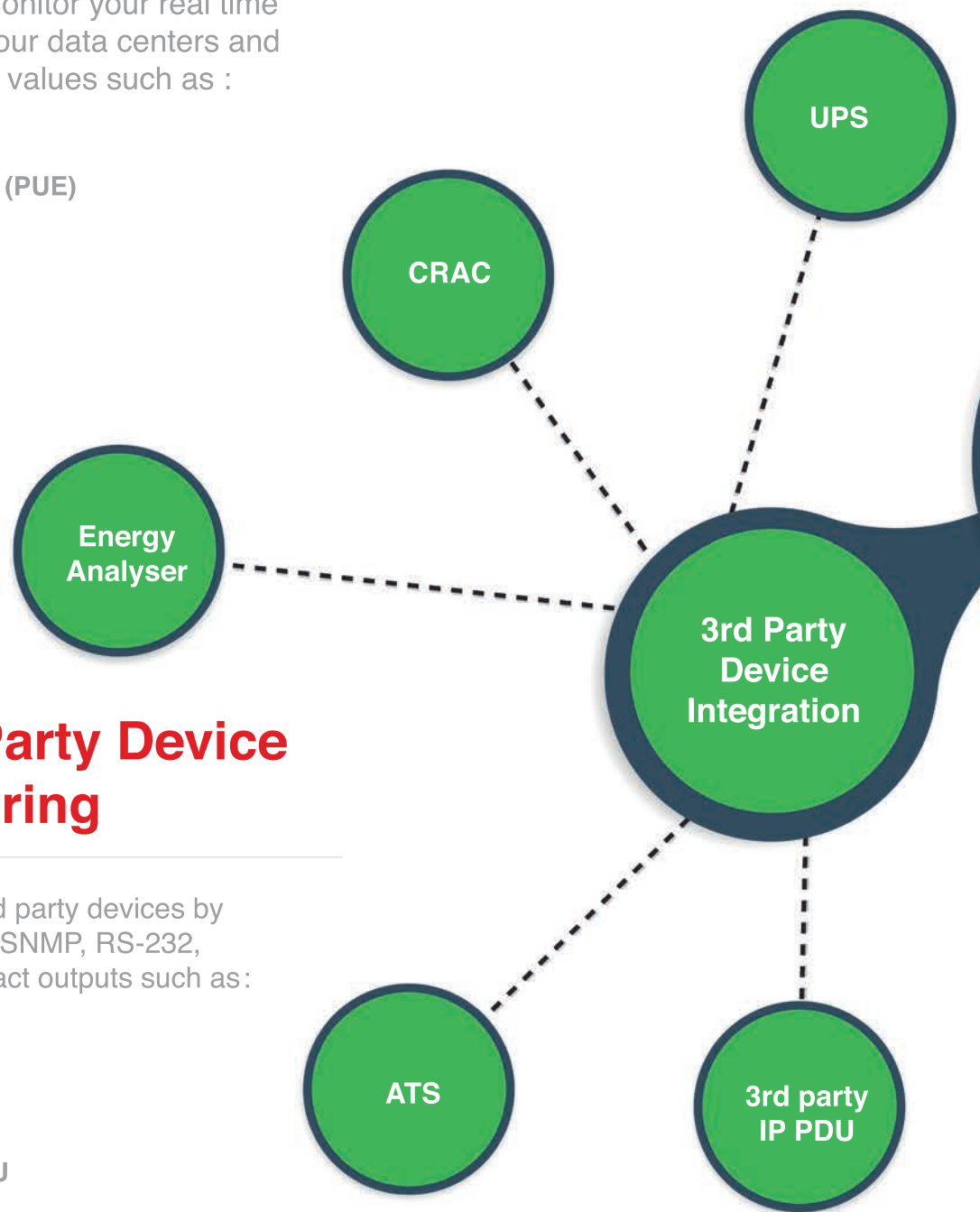


Energy Management System

SmartPack Energy Management

EXAGATE SmartPack Centralized Management Software allows you to monitor your real time energy consumption in your data centers and remote sites by reporting values such as :

- ✓ Power Usage Efficiency (PUE)
- ✓ Energy Consumption
- ✓ Carbon footprint
- ✓ Energy Cost
- ✓ UPS Load



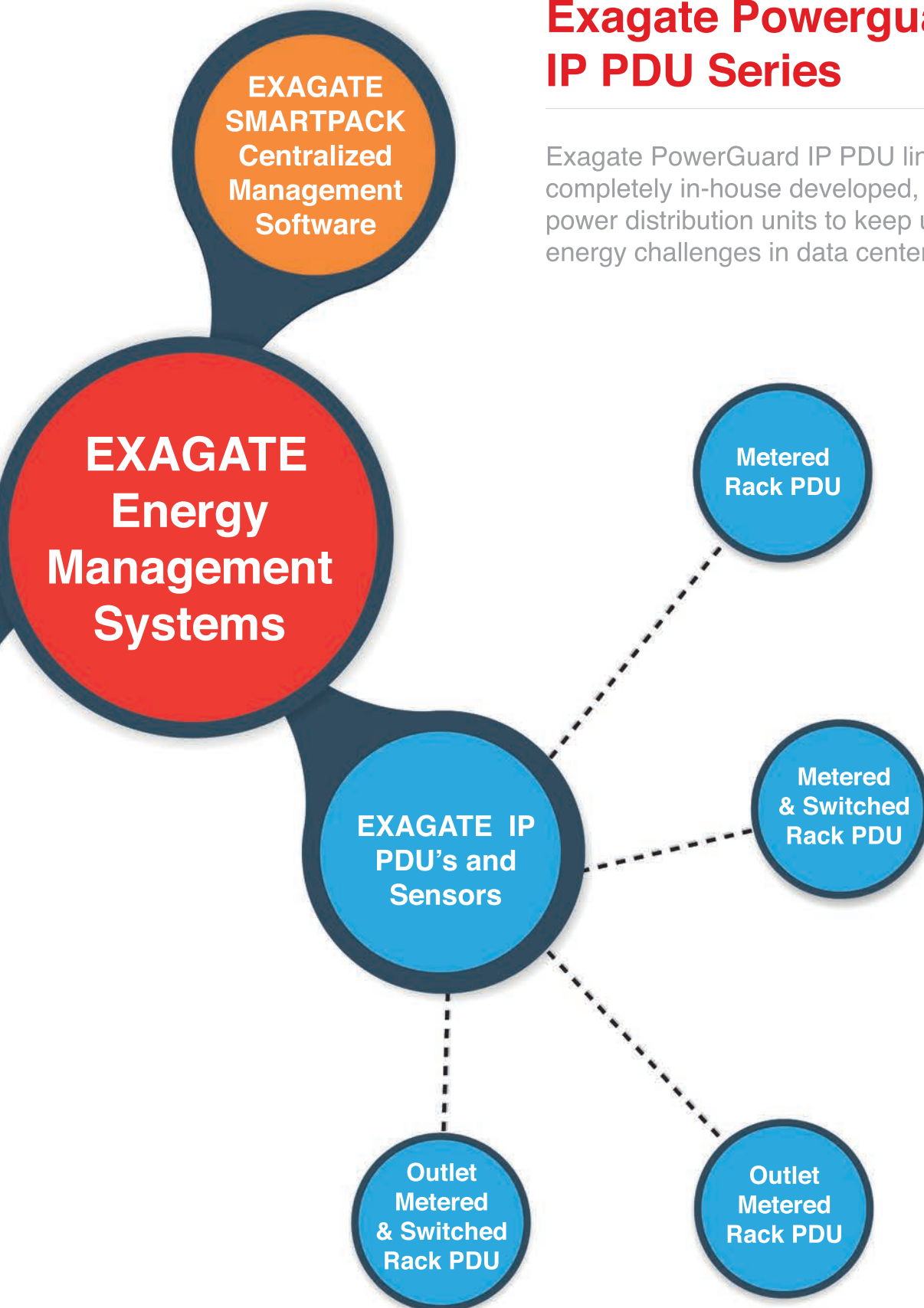
Exagate 3rd Party Device Power Monitoring

EXAGATE monitors the 3rd party devices by collecting information over SNMP, RS-232, RS-485, Modbus, dry contact outputs such as :

- ✓ UPS
- ✓ Air conditioner / CRAC
- ✓ Power generator
- ✓ 3rd Party intelligent PDU
- ✓ Energy Analyzer
- ✓ ATS
- ✓ Rectifier etc...

Exagate Powerguard IP PDU Series

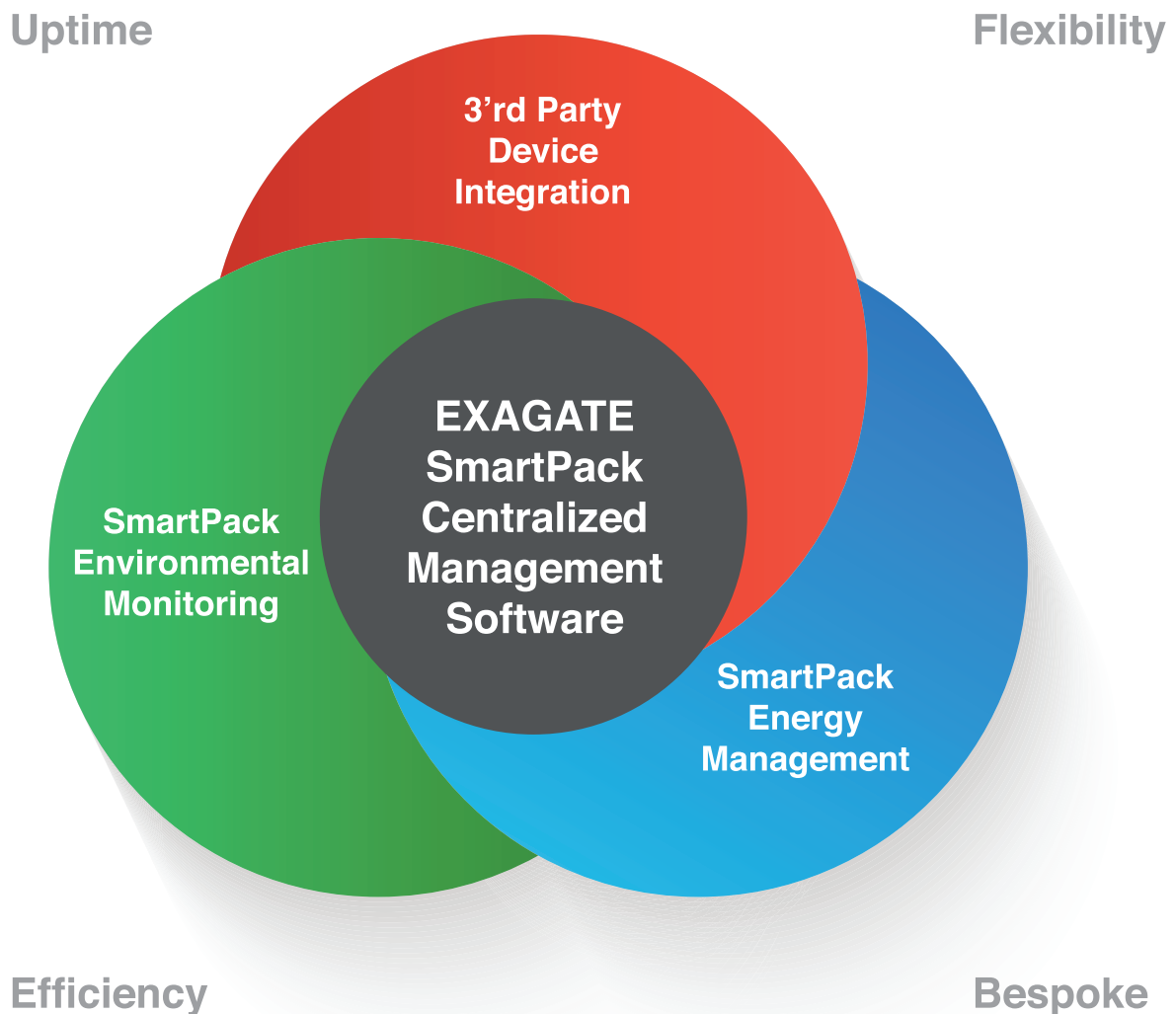
Exagate PowerGuard IP PDU line contains completely in-house developed, state of the art power distribution units to keep up with today's energy challenges in data centers.



SmartPack Centralized

SmartPack Centralized Management Software

SmartPack is the ultimate soft tool to monitor and manage the environmental and energy parameters of your data centers – multi-branch or remote sites. Strong 3rd party device integration and customized solutions enable total coverage and control of your physical IT infrastructure for service sustainability and reporting.

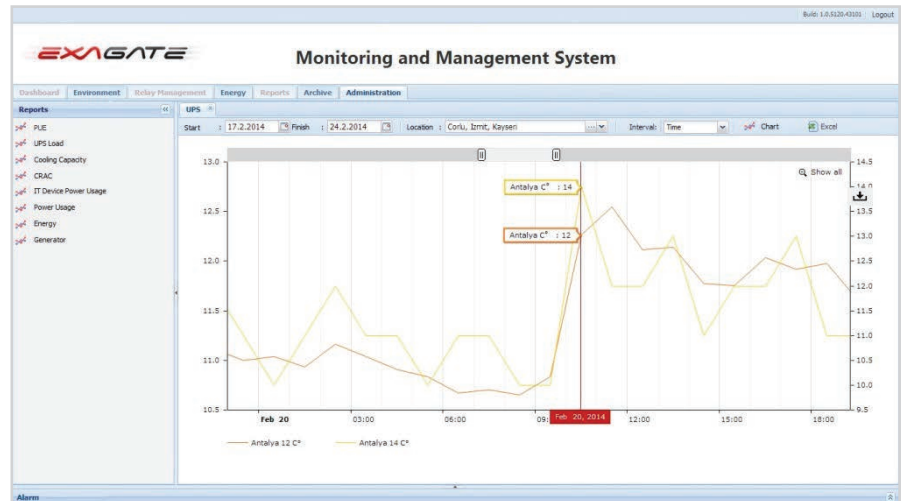


Management

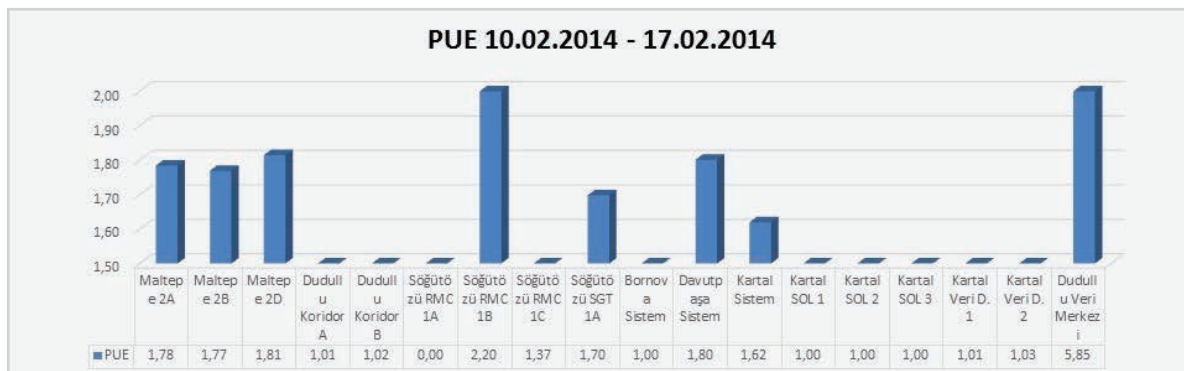
SmartPack Environmental Reports

Graphical and Numerical Reports

- ✓ Temperature, humidity, air flow, air quality, energy etc.. detailed reports
- ✓ Flood, smoke, vibration, movement, door etc... alarm reports
- ✓ Remote site reports
- ✓ Connection failure reports



SmartPack Energy Reports



Graphical and Numerical Reports

- ✓ Power Usage Efficiency (PUE) reports
- ✓ Carbon Emission reports
- ✓ Energy consumption reports (UPS, CRAC, IT devices etc...)
- ✓ Energy cost reports
- ✓ Cooling capacity reports
- ✓ Energy trend reports

Summary

SYSTEMS

Environmental Monitoring

Energy Management

Centralized Management

HARDWARE

SYSGUARD
6001

SYSGUARD
3001

SYSGUARD
2001

POWER
GUARD
IP PDU

CUSTOMIZED
APPLIANCE

GSM/
ETHERNET
MODEM etc.

SOFTWARE

WebPack

SmartPack

Environmental Monitoring Management

Energy Management

Data Center Management

Branch Office Management

Remote Site Management

SOLUTIONS

Rack Monitoring

Power Monitoring

Electricity Meter Monitoring

Transformer Station Monitoring

Generator Monitoring

UPS Monitoring

Energy Analyzer Monitoring

Military Shelters Monitoring

Mobile Electronic System Integration (Mobese) Cabinet Monitoring

Rectifier Monitoring for GSM Base Stations and Telecom Exchanges

Environmental Monitoring & Management

Data Center Monitoring & Management

Branch Office Monitoring & Management

Remote Site Monitoring & Management

Indoor and Outdoor Cabinet&Enclosure Monitoring & Management

Telecom MDF and ODF Monitoring & Management

TV / Radio Broadcast Station Monitoring & Management

GSM Base Station Monitoring & Management

Troubleshooting

Power Consumption

Uptime

Carbon Footprint

Power Usage Efficiency

Alarm

Environmental Monitoring

Centralized Management

Remote Management

Energy Management

High Availability

Power Cost

Workforce Efficiency

IT Infrastructure Monitoring



**Eksagate Elektronik Mühendislik
ve Bilgisayar San. Tic. A.Ş.**

Şehit Ahmet Sk. No:12/1
Mecidiyeköy / İstanbul / Turkey
T: +90 212 275 73 22
F: +90 212 275 35 80
www.exagate.com



www.kosgeb.gov.tr
İstanbul, 2014

Baskı Tarihi
07 Temmuz 2014

Basım Yeri



**Pastel İletişim Açık hava Rek.
İth. İhr. San ve Tic. Ltd. Şti.**

Tercüman Sitesi A-4 Blok No: 2
Cevizlibağ - İstanbul
T: +90 212 547 47 88
www.cityajans.com



Monitoring and Management Systems

Eksagate Elektronik Mühendislik ve Bilgisayar San. Tic. A.Ş.
Şehit Ahmet Sk. No:12/1 Mecidiyeköy / İstanbul / Turkey
T: +90 212 275 73 22 F: +90 212 275 35 80

