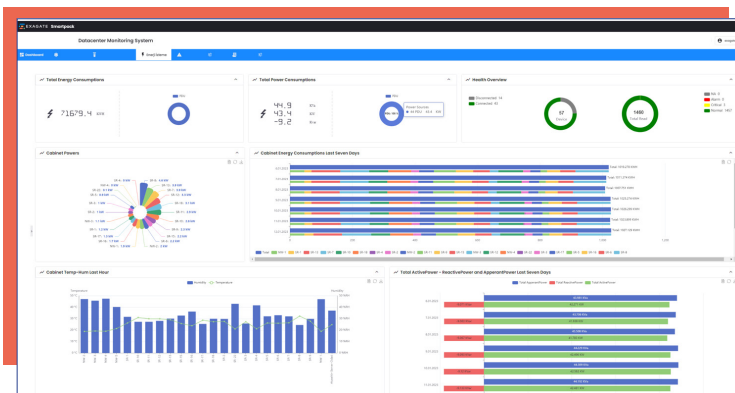




# SMARTPACK CENTRAL MANAGEMENT SOFTWARE

SmartPack monitors, manages, and reports your environmental and energy data in locations such as data centers, multi-branch businesses, and remote stations.



## Environmental Monitoring

Monitors the changes in the environment such as temperature, humidity, water leakage, air quality

## Energy Monitoring

Monitors the energy consumption of your IT and infrastructure equipment at your facility

## Power and PUE Analysis

Ensures your energy efficiency in your Data Center and System Rooms

## Setting Alarms

Creating an alarm for threshold values that users can set

## Management

Provides system control of scenarios created on alarms

## Reports

Creating historical environmental and energy monitoring reports

- Efficient energy use (PUE) reports
- Carbon emission reports
- Energy consumption reports
- Energy cost reports
- Cooling capacity reports
- Energy trend reports
- Cooling and energy capacity reports

## Map Support

Tracking locations via online and offline maps

## Security

Enabling users to access devices with role-based access control

## Billing

Invoicing over your equipment's electricity consumption

## Camera Support

High resolution camera support

## Central Monitoring

Web interface that can monitor multiple locations on one screen

## Diagrams

Setting alarms on the dynamic diagram of the location Dynamic alarm and visualization feature with visuals of your facility's single-line diagrams Monitoring & Management System

